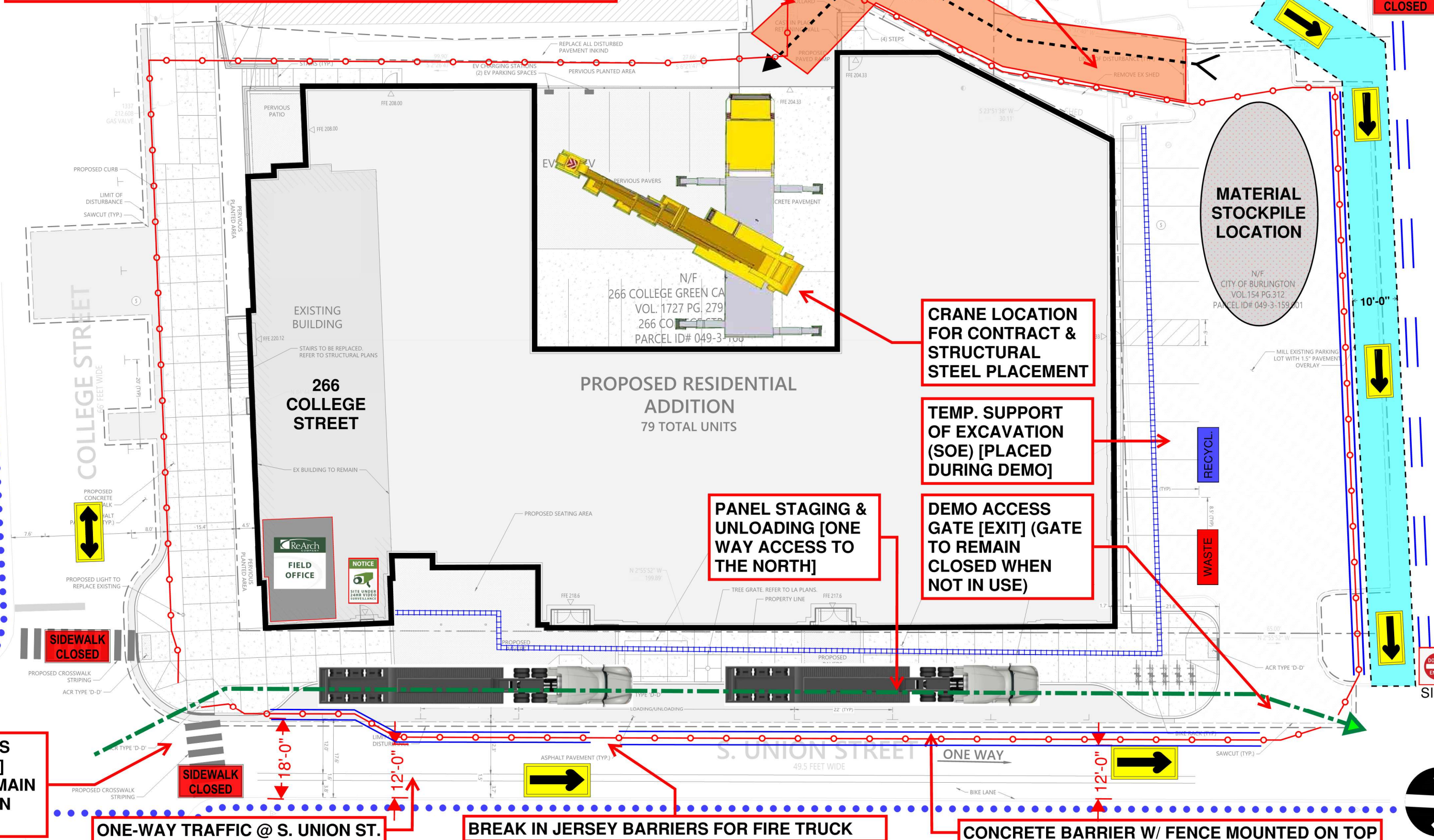




ACCESS RAMP TO BE TEMPORARILY CLOSED FOR FOUNDATION EXCAVATION & PLACEMENT IN THIS LOCATION IN COORDINATION W/ DPW & NEIGHBORING TENANTS

PUBLIC RAMP ACCESS AVAILABLE FOR LOWER GRADE/MATERIAL/EQUIP. LOADING, TO BE COORDINATED WITH REARCH SUPERINTENDENT



DEMO ACCESS GATE [ENTRY] (GATE TO REMAIN CLOSED WHEN NOT IN USE)

ONE-WAY TRAFFIC @ S. UNION ST.

BREAK IN JERSEY BARRIERS FOR FIRE TRUCK

CONCRETE BARRIER W/ FENCE MOUNTED ON TOP



